



UNI FAN SL RGB

REVOLUTIONIZED DAISY-CHAIN ARGB FAN

UNI FAN Software instructions

積木風扇軟體使用說明



Download / 下載



L-Connect 2 Software

積木風扇控制軟體

<https://www.lian-li.com/downloads/L-connect 2.zip>



User Manual

積木風扇使用說明書

<https://www.lian-li.com/downloads/Unifan-manual.pdf>

INSTALL / 安裝

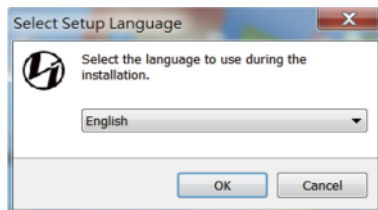


Click the L-Connect 2 icon and follow the instructions to complete the installation.

點擊 L-Connect 2 圖示並依照指示即可完成安裝。

Choose language preference:
English & Simplified Chinese.

選擇使用語系：英文 & 簡體中文。





(A) Motherboard Software Sync

與主機板同步

(B) Software control

軟體控制項

(C) Controller list

控制器列表

(D) UNI FAN Status monitor

UI 風扇群組狀態



(E) Fan speed setting

風扇轉速設定

(F) Lighting effect settings

燈效設定

A Motherboard Software Sync / 與主機版同步

	Motherboard Software Sync OFF 	Motherboard Software Sync ON 
STATE 聯動狀態	OFF (Default) 關閉(預設值)	ON 開啟聯動
Lighting Effect & RPM Control 風扇燈光&轉速	L-Connect2 AP control L-Connect2 AP控制	Motherboard software control 主機板控制

Easy to Sync with Motherboard

易與主機板同步



- ⚠ The motherboard software usually outputs 100% brightness as performing white color light. To prevent color discord, do not connect more than 10 fans on one controller while performing white light or lower to 60%-75% brightness in the software.

當同步主機板燈光效果時，主機板控制燈效AP輸出為「白色光源且亮度數值為100%」，單一控制器最多可以接上10顆風扇；如需要兼容10顆以上的風扇，建議主機板控制燈效AP亮度數值設定，由100%向下調整為60~75%。

- ⚠ Please note each ARGB 5V header only supports maximum of 2 controllers to sync to the motherboard.

請注意，每個ARGB 5V接頭連接器最多僅支持2個與主板同步的控制器。


Access settings / 存取設定

Export

Save the set value
保存設定值

Import

Import the set value
匯入設定值

 After importing the data, please click [Apply] to activate the settings.

匯入資料後，必須按下 APPLY 按鈕，設定值才會生效。

Setting / 設定



Click to enter Settings.

點擊齒輪按鈕進入設定頁面。

ON



Auto-Run on boot

Run L-Connect2 automatically on rebooting.

開機時是否自動執行 L-Connect2。

version 2.0

Version of L-Connect2.

L-Connect2 版本。

Able to control maximum 4 controllers.

可支援最多4組控制器。

Controller01 Controller02 Controller03 Controller04



Maximum 16 fans link to a controller.

一組控制器可接16顆風扇。

Status / 狀態說明

Monitoring Controller.

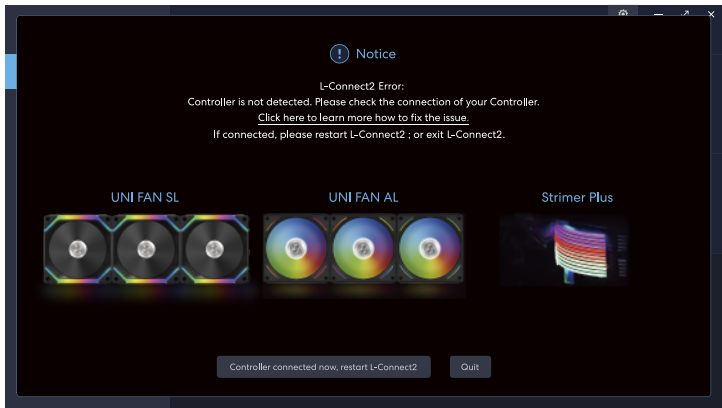
已選擇當前控制器。

Controller01 Controller02 Controller03 Controller04

Detected Controller.

已偵測可使用的控制器。

Controller (UNI HUB) not detected / 未偵測到控制器



L-Connect2 Error:

Controller is not detected. Please check the connection of your Controller.
Learn more how to fix the issue.

<https://lian-li.com/faq/>

If connected, please click [Controller connected now, restart L-Connect2] to restart L-Connect2 ; or click [Quit] to exit L-Connect2 .

L-Connect2 無法正常運行：

並未偵測到控制器，請確認是否已連接控制器。

參考修正方式 <https://lian-li.com/faq/>

若已連接請點擊按鈕「已連接，重新啟動L-Connect2」;

若無則點選「離開」並關閉 L-Connect2。

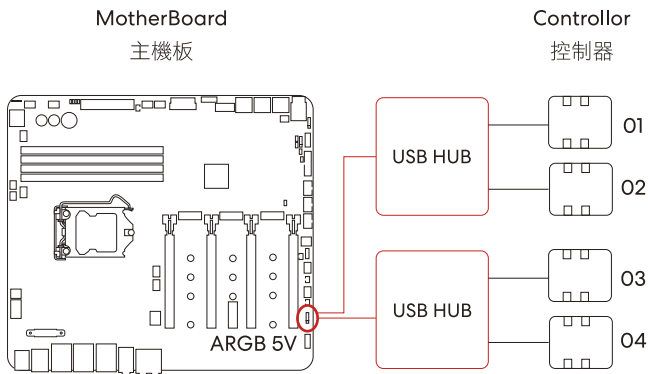
Suggest to start L-Connect2 software after windows has completely turn on to avoid lags due to perform detection.

建議windows開機程序跑完後，再啟動L-Connect2軟體，避免因執行偵測而卡頓。

Extra Controller / 擴充控制器

⚠ Note that the USB 9 PIN extension cable can only connect maximum 2 controllers. If more controller is needed, please use an internal USB-HUB which is compatible with USB 2.0 product regulation to ensure operation.

請注意，控制器與主版連接的USB線材，最多僅支援兩個控制器。
欲擴充超過兩個控制器，需使用內接式USB-HUB。
(需兼容USB2.0產品規範，以確保運作正常。)





Four fans in one group; Four groups in total for a controller.

四顆風扇為一個群組；一個控制器有四個群組。

Fan Group.
風扇群組。

Show the fan speed mode of the group.
顯示該群組風扇轉速模式。

Display the LED lighting mode of the fan group.
顯示該群組風扇LED燈光模式。

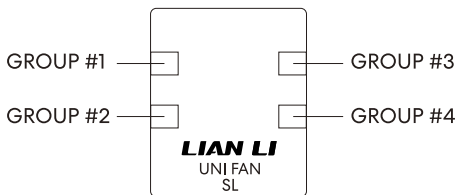
Display the fan RPM of the group.
顯示該群組風扇轉速。

! Corresponding position for the hardware fan and software fan group, please refer to the controller description.

硬體風扇與軟體群組風扇對應位置，請參照控制器說明。

CONTROLLER

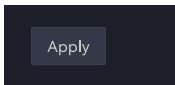
控制器



E Fan speed setting / 風扇轉速設定

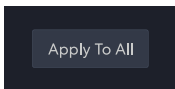


MODE / 模式	FAN SPEED / 風扇轉速
PWM	RPM adjusted with MB signal 信號來源為主機板
QUIET	800 RPM (SL140:800 RPM)
HIGH SPEED	1570 RPM (SL140:1350 RPM)
FULL SPEED	1900 RPM (SL140:1500 RPM)
MANUAL	Drag click to adjust the fan speed. 可用滑鼠拖拉改變風扇轉速



Apply fan speed settings to the selected single group of fans.

套用該風扇群組的轉速設定。



Apply fan speed settings to all the fans connected to the selected controller.

套用該控制器所有風扇的轉速設定。



Control the fan speed as groups (Max 4 fans).

風扇轉速設定,採群組(Max 4顆)為單位。

Please click [Apply] to activated the adjustment.

數值變更後，必須按下Apply按鈕才能生效。

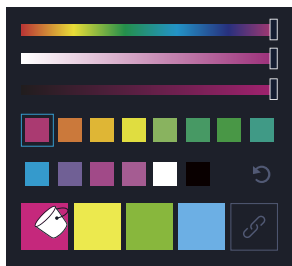
To pass control of the fan speed to motherboard, please enter your MB BIOS to check if your fan header is at PWM mode (not DC mode nor Auto mode).

風扇轉速與主板同步，需在主板BIOS設定對應的風扇為PWM模式。

F Lighting effect settings / 燈效設定



- ① Select group. / 選擇群組。
- ② Select LED mode. / 選擇燈效。
- ③ Select to control the number of fans in the group.
選擇該群組欲控制的風扇數量。
- ④ Choose the lighting effect color. / 燈效配色。



Choose a color from Color Pallet and adjust, and replace the lighting effect color. The Color Pallet will be saved automatically.

從調色盤選擇一個顏色並調色，接著替換底下的燈效顏色。調整過的調色盤將會自動儲存。



Factory reset Color Pallet.

回復調色盤的預設值。



Sync all the color with the first selected color.

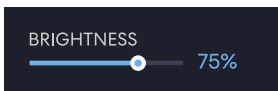
同步第一個所選的顏色。

⑤ Light effect editing. / 燈效屬性設定。



SPEED : Set the light effect running speed.

燈效速度設定



BRIGHTNESS : Set the light effect brightness.

燈光亮度設定



DIRECTION : Set the direction of the lighting effect.

燈效向左或向右移動

⑥ Apply light effect settings to the selected single group of fans.

套用燈效設定至該群組風扇。

⑦ Apply light effect settings to all the fans connected to the selected controller.

套用燈效設定至該控制器的所有風扇。

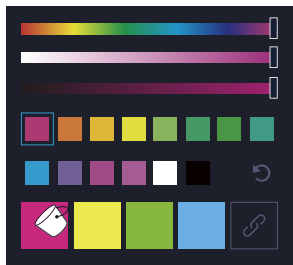
⑧ Restore default lighting effects to the selected single group of fans.

該群組風扇的燈效設定回復預設值。

F Lighting effect settings : Sync Mode / 燈效設定 : 串聯模式



- ① Select Sync mode. / 選擇Sync模式。
- ② Select the number of fans to join SYNC in each group.
選擇各群組要加入Sync的風扇數量。
- ③ Choose the lighting effect color. / 燈效配色。



Choose a color from Color Pallet and adjust, and replace the lighting effect color. The Color Pallet will be saved automatically.

從調色盤選擇一個顏色並調色，接著替換底下的燈效顏色。調整過的調色盤將會自動儲存。



Factory reset Color Pallet.

回復調色盤的預設值。



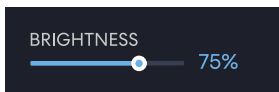
Sync all the color with the first selected color.

同步第一個所選的顏色。

④ Light effect editing. / 燈效屬性設定。



SPEED : Set the light effect running speed.
燈效速度設定。



BRIGHTNESS : Set the light effect brightness.
燈光亮度設定。



DIRECTION : Set the direction of the lighting effect.
燈效的移動方向。

⑤ Apply light effect settings to all the fans connected to the selected controller.

套用燈效設定至該控制器所有風扇。

⑥ Restore default lighting effects to all the fans connected to the controller.

燈效設定回復預設值後，解除sync模式，各組燈效為彩虹模式。



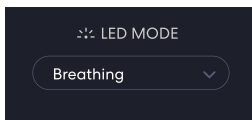
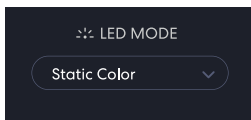
Fan mode still can be contolered when the LED SYNC mode is selected.

選用LED SYNC 模式時，FAN MODE 功能依然可以使用。

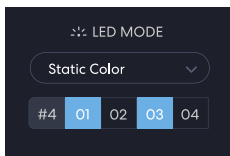
Individually control the LED of each fan in a group / 風扇個別開關與調色



- ① Select group. / 選擇群組。
- ② Select **Static Color** or **Breathing Mode**. / 選擇**定色**或**呼吸**模式。



- ③ Select the fan number to turn on or off the LEDs.
選擇該群組欲控制的風扇數量。



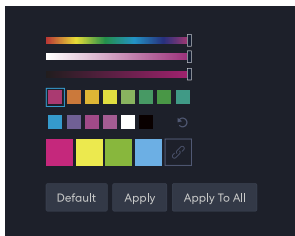
Turn on or off each fan.
風扇可個別開/關。

- ④ Choose the lighting effect color. / 燈效配色。



Able to separately set the color of the each fan, matching the 01-04 fans.

可個別設定顏色，分別對應 01~04 風扇。



- ⑤ BRIGHTNESS : Set the light effect brightness.

燈光亮度設定。

- ⑥ Apply light effect settings to the selected single group of fans.

套用燈效設定至該群組風扇。

- ⑦ Apply light effect settings to all the fans connected to the selected controller.

套用燈效設定至該控制器的所有風扇。

- ⑧ Restore default lighting effects to the selected single group of fans.

該群組風扇的燈效設定回復預設值。